



**Rethink  
Learning**  
Discovery  
Vitality  
Camaraderie  
Enrichment  
Creativity



**Northwestern**  
PROFESSIONAL STUDIES

# 2022 OLLI SUMMER SEMESTER

TUESDAY, JULY 5–MONDAY, AUGUST 1, 2022

# CONTENTS

- 3 From the Director
- 4 How to Register and Become a Member
- 6 Summer 2022 Membership
- 7 Study Groups At-A-Glance
- 10 Study Group Descriptions
- 26 Technology Overview
- 27 Upcoming Events
- 28 Policies and Standards of Conduct
- 32 Health & Safety Requirements and Information
- 33 Registration Information
- 34 Logistics
- 35 Northwestern Services and Resources

## KEY DATES:

### **Thursday, June 9: Summer memberships available for purchase**

Please take advantage of this extra time to buy your membership early. Then, when registration opens, all you will need to do is select your study groups and quickly check out.

### **Thursday, June 16 at 9 a.m.: Summer study group registration opens**

### **Monday, June 27 at 9 a.m.: Summer study group registration closes**

## Osher Lifelong Learning Institute

### MISSION STATEMENT

The mission of the Osher Lifelong Learning Institute (OLLI) is to enable the continuation of learning and intellectual pursuit for a community of mature adults. As a special program of Northwestern University's School of Professional Studies, OLLI offers a comprehensive curriculum of peer-led discussion groups covering topics in areas such as literature, history, politics, science, philosophy, current affairs, and the arts. OLLI welcomes diversity in its membership, and has no academic prerequisites or age restrictions.



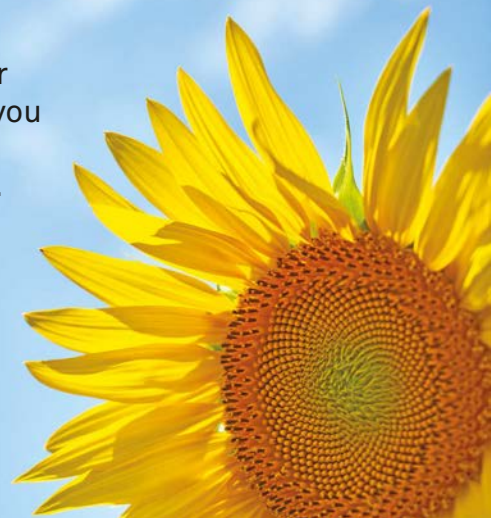
## FROM THE OLLI DIRECTOR, **KARI FAGIN**

Did you know a sunflower is actually made up of a thousand smaller, individual flowers? As I mentioned at last month’s annual meeting, OLLI reminds me of a sunflower—a beautiful entity when viewed in its entirety but would not be possible without each and every individual who makes up this amazing program. Thank you for your contributions

as members, coordinators, volunteers, and leaders—for being those individual components that make up the whole.

OLLI has a bright future ahead. Yes, we’re continuing to offer stimulating study groups. In addition, in the coming terms, you will see more exciting in-person events that will further our connections with one another and build greater community. Just as a sunflower turns toward the sun each day, let’s all turn toward OLLI’s bright future. And let’s continue to grow by inviting your friends and neighbors to join OLLI this summer and into the 2022-2023 academic year ahead.

Joy in Learning and Community,  
Kari  
**Kari Fagin, Director of Northwestern OLLI**



### **RIGHT NOW:**

Log into the OLLI Online Registration System ([northwesternolli.augusoft.net](http://northwesternolli.augusoft.net)) today.

This will ensure you know your username and password before registration day. By preparing early, our team will have the time to help you if you have any difficulty.

- Note: If you are an existing member and cannot remember your username and password, do NOT create a new profile.
- Remember, this login information is different than what is used to log into Canvas.

### **BEFORE REGISTRATION DAY:** (June 9–June 15)

1. If you do not have a current membership, [purchase](#) your 2022 OLLI summer membership.
2. Review the study group offerings and **begin thinking about your list of 1<sup>st</sup>, 2<sup>nd</sup>, and 3<sup>rd</sup> choices.** Many groups fill quickly, so be open to other options that expand your interests and your exposure to new friendships.

### **REGISTRATION DAY IS THURSDAY, JUNE 16:**

[Registration](#) opens at 9 a.m.

Registration closes Monday, June 27 at 9 a.m.

Your early preparation should prevent registration day issues, but if you need help on registration day, contact us (see contact information below). OLLI staff or a volunteer will be in touch as quickly as possible. This day is extremely busy, so we ask for your patience.

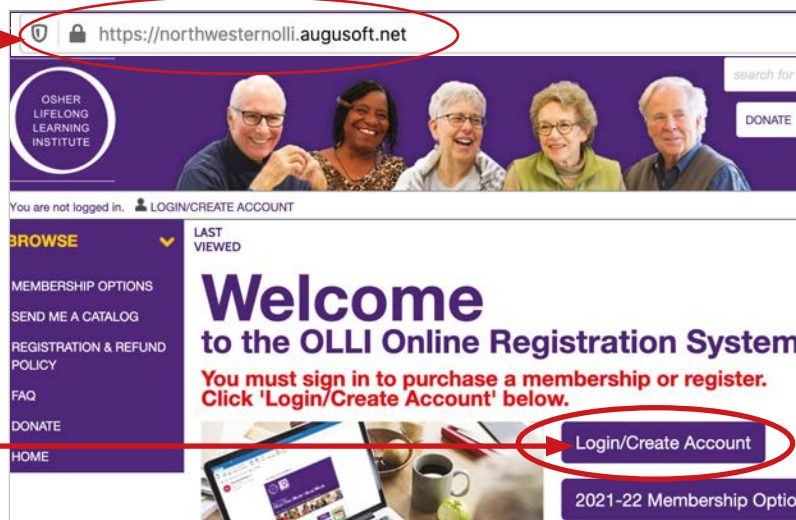
### **CONTACT INFORMATION:**

For assistance email OLLI: [olli@northwestern.edu](mailto:olli@northwestern.edu).

\*OLLI accepts Visa, Mastercard, American Express, or Discover through the OLLI Online Registration System.

# HOW TO PURCHASE MEMBERSHIP AND REGISTER FOR STUDY GROUPS

- Go to the OLLI Online Registration System (Augusoft) which can be accessed at: <https://northwesternolli.augusoft.net>



- This takes you to the **Sign In** page.

## EXISTING USERS:

If you are a **current or former member and have a Profile in the system:**

**SIGN IN to Your Account** with your **Username** and **Password**.

- Make sure the option says **Student** in the pulldown menu.
- If you have forgotten your Username or Password, click on the **Forgot Your Username?** or **Forgot Your Password?** links.

**DO NOT CREATE A NEW PROFILE**

## NEW USERS:

If you are a **new user, please create a new profile.**

Click **Create New Profile** and follow the prompts

- On the Profile Creation page, select Student Profile (single user) button (it should be clicked already), click Submit.
- Fill in the necessary information for Step 1, Step 2, and Step 3 tabs.
- Click **Submit** to register your account.

If you need assistance, please email [olli@northwestern.edu](mailto:olli@northwestern.edu)

New Members who have created a profile and Existing Members who have signed in can now continue to **Purchase Membership** — instructions on next page.

**PURCHASE MEMBERSHIP (Beginning June 9, 2022)**

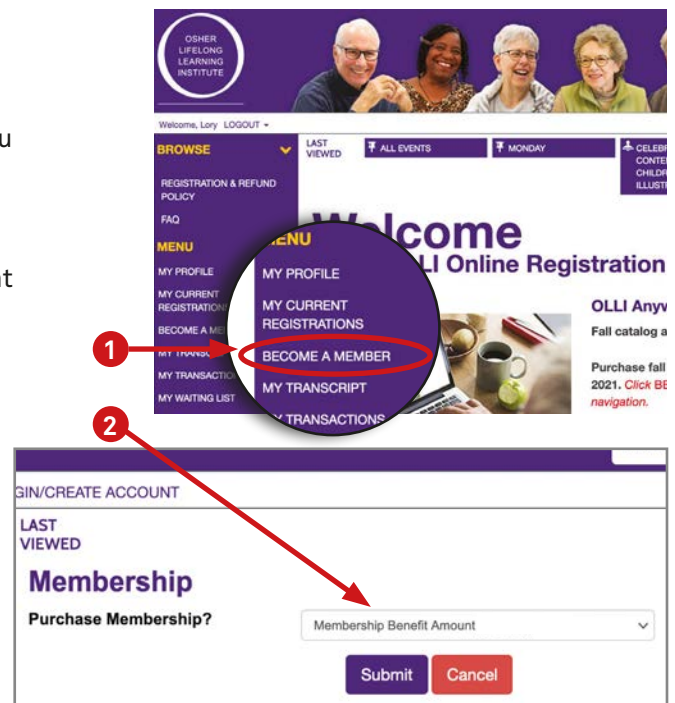
1. If you do not already have a membership; on the **Welcome Registration** home page, click **BECOME A MEMBER** in the purple column on the left.
2. On the **Membership** page, select the membership option you wish to purchase from the dropdown menu.
3. You will then be led to your cart page. Continue with the prompts to check out.
  - In order to check out, you must attest to the Covid consent form (below).

**Osher Lifelong Learning Institute**

I hereby attest that I have been fully vaccinated for COVID-19 with an FDA- or WHO-authorized vaccine and have also obtained a COVID-19 booster (by March 7, 2022, or 30 days after becoming eligible, whichever is later), or that I have one of the following two vaccine exceptions: a documented health condition or a sincerely held religious belief. If I have a vaccine exception, I commit to wearing a mask at all times while on campus and completing testing as required.

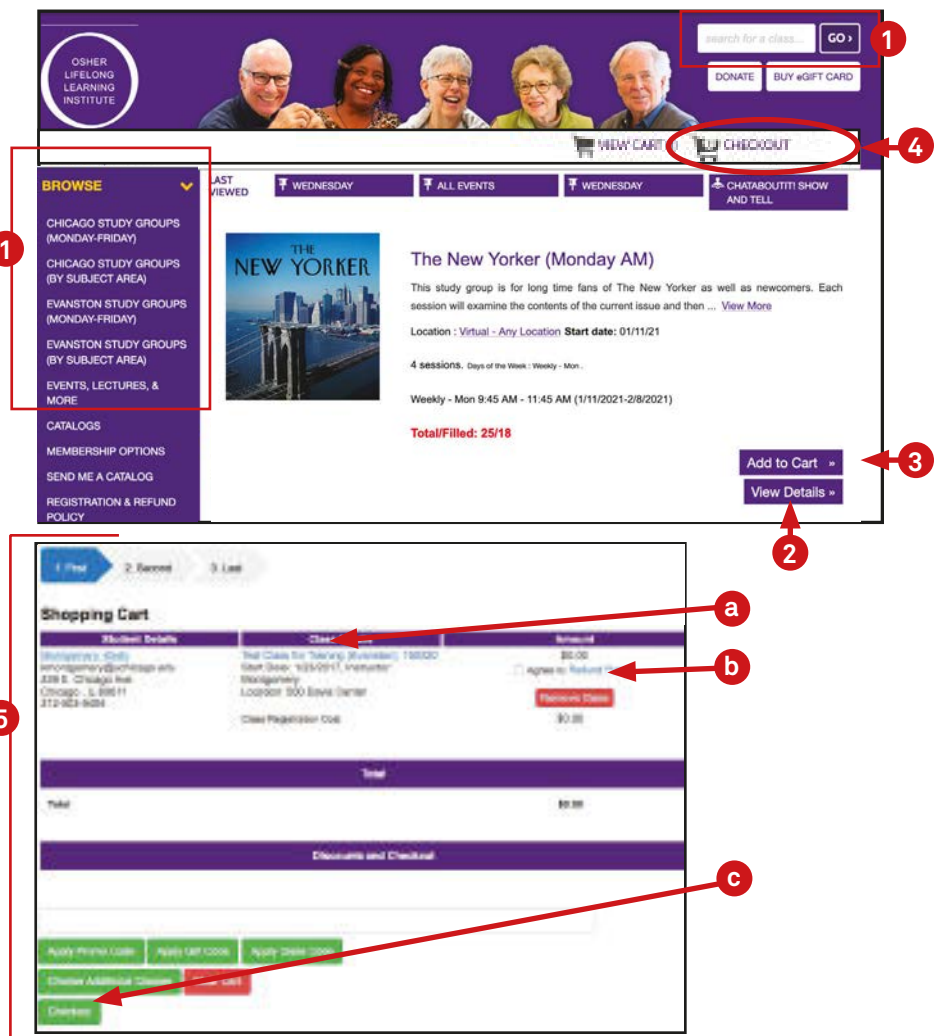
Signature

I Agree
Cancel



**REGISTRATION (Beginning June 16, 2022):**

1. **BROWSE** Study Groups by location, by day, or by subject area. Or, type a portion of the title in the SEARCH bar at the top right of the page.
2. For more information about a Study Group click **View Details**.
3. Once registration is open, to register for a Study Group click **Add to Cart**.
  - To register for additional Study Groups, repeat Step 1 through 3.
4. To complete your registration click **CHECKOUT** at the top right of the screen.
5. Finish your checkout by:
  - a. Reviewing your selections
  - b. Clicking the **Agree to Refund Policy** box
  - c. Clicking the green **CHECKOUT** box at the bottom of the screen.



Wait for the screen that says “Your transaction has been processed successfully”

You will also receive a confirmation email of your registration.



# SUMMER 2022 MEMBERSHIP

If you are not a current OLLI member, beginning June 9 you may purchase a summer 4-week membership [here](#).

MEMBERSHIP TYPE	PRICE
Summer Only (purchase beginning June 9)	\$155 Includes two (4-week) study groups.

**BEYOND THE STUDY GROUPS ... ALL OLLI MEMBERS ENJOY**

- A community of engaged and engaging peers
- Special lectures and noontime events
- Workshops to enhance the OLLI experience
- Special events and cultural opportunities
- Weekly eNotices about campus activities throughout the year
- The opportunity to participate in OLLI committee work

The academic year is divided into 4 terms:

Fall or Spring Semester = 14 weeks each Winter or Summer Session = 4 weeks each

A new OLLI academic calendar begins each fall semester. Therefore, full year memberships are only available in the fall. [Click here](#) for fall membership information.



PHOTO BY OLLI MEMBER TED DAVIS



Osher Lifelong Learning Institute  
Northwestern University School of Professional Studies

OLLI SUMMER SEMESTER • BEGINS TUESDAY, JULY 5, 2022

# STUDY GROUPS AT-A-GLANCE

## KEY

**CE:** Civic Engagement

**CI:** Contemporary Issues

**CA:** Creative Arts

**HIS:** History & Government

**LIT:** Literature

**STMH:** Science, Technology, Medicine & Health

PHOTO BY OLLI MEMBER JOE SIMCHAK



PHOTO BY OLLI MEMBER JOE SIMCHAK

PHOTO BY OLLI MEMBER TED DAVIS



PHOTO BY OLLI MEMBER TED DAVIS

*Continued on next page*

## CHICAGO IN-PERSON STUDY GROUPS

### Monday

NEW 9:45 a.m. HIS Exploring Rosehill Cemetery

### Tuesday

NEW 9:45 a.m. LIT Gawain and the Green Knight as Speculative Fiction

NEW 9:45 a.m. STMH How Did We Sip, Dance, and Stumble Our Way to Civilization?

1:15 p.m. CA Classic Films of the Fifties: The Last Roles of James Cagney

–4:15 p.m.

NEW 1:15 p.m. CA Legacy of Excellence: Brass History of Chicago Symphony Orchestra

### Wednesday

NEW 9:45 a.m. HIS *The Things They Carried*

NEW 9:45 a.m. LIT Zora Neale Hurston: *Their Eyes Were Watching God*

NEW 1:15 p.m. CI Putin's War and Its Impact on the World

### Thursday

NEW 9:45 a.m. CI Chicago Neighborhoods

NEW 9:45 a.m. LIT Black Mystery Writers

1:15 p.m. CA Classic Crime Cinema: Dishonor Among Thieves

–4:15 p.m.

NEW 1:15 p.m. HIS Sunflowers in Ukrainian Village

## EVANSTON IN-PERSON STUDY GROUPS

### Monday

9:45 a.m. CI *The New Yorker*

NEW 9:45 a.m. HIS Tenement Tales: Immigrant Life in 19th Century New York

NEW 1:15 p.m. CI *The Twilight of Democracy: The Seductive Lure of Authoritarianism*

### Tuesday

NEW 1:15 p.m. HIS Seneca Falls and the Origins of the Women's Rights Movement

### Wednesday

9:45 a.m. CA Creative Writing Workshop

### Thursday

NEW 1:15 p.m. LIT The New York School Poets

*Continued on next page*

## OLLI ANYWHERE VIRTUAL STUDY GROUPS

### Monday

	9:45 a.m.	LIT	Tevye The Dairyman: Stories by Sholem Aleichem
	1:15 p.m.	CI	<i>The New Yorker Magazine</i> 1920s to Present
NEW	1:15 p.m.	CA	<i>Romeo &amp; Juliet</i> and <i>Tony &amp; Maria</i>

### Tuesday

NEW	9:45 a.m.	CI	<i>The South Side: A Portrait of Chicago and American Segregation</i>
NEW	9:45 a.m.	CA	Exploring the Visual Arts
NEW	9:45 a.m.	HIS	Five Days with Winston Churchill—May 1940
	1:15 p.m.	CA	Tuesday at the Movies

### Wednesday

	8:45 a.m.	CA	Capturing Chicagoland Through Photography
	-11:45 a.m.		
	9:45 a.m.	CI	Foreign Affairs
	1:00 p.m.	CI	Economist B
	1:15 p.m.	CI	Front Page Stories from Sunday's <i>New York Times</i>
NEW	1:15 p.m.	CA	The Fourth Estate in Film

### Thursday

NEW	9:45 a.m.	CA	Haiku: Capturing the Essence
NEW	9:45 a.m.	HIS	1953: What Happened to Democracy in Iran
	1:15 p.m.	CI	<i>The Economist</i>
	1:15 p.m.	STMH	Science Times

### Friday

NEW	9:45 a.m.	CI	<i>How Democracies Die</i>
-----	-----------	----	----------------------------





Osher Lifelong Learning Institute  
Northwestern University School of Professional Studies

OLLI SUMMER SEMESTER • BEGINS TUESDAY, JULY 5, 2022

# STUDY GROUP DESCRIPTIONS

## ICON KEY

High	High level of discussion	Movies/documentaries shown
Med	Medium level of discussion	Access to Netflix or other streaming service required
Low	Low level of discussion	Kindle edition available
40+	Reading: At least 40 or more pages per week	Extensive use of Canvas
20+	Reading: Roughly 20-40 pages per week	Digital SLR Camera Required
-20	Reading: Less than 20 pages per week	

## Northwestern OLLI is a uniquely engaging peer learning experience.

Northwestern OLLI is one of only a few lifelong learning programs across the country that is based on a peer-led model, meaning we actively learn with and from one another in seminar-style discussion groups versus a more passive instructor-led experience. In our peer-led model, each of you brings your diverse experiences, backgrounds, careers, talents, and perspectives to the discussion. The result is deeper learning, greater community, richer conversation, and a truly unique and meaningful experience!

### Your role in the peer-led experience:

- **Prepare:** Carefully and purposefully read assigned material and discussion questions in advance. Consider ideas, arguments, or views presented in the selection. Highlight, make notes, and identify questions you want to explore.
- **Participate:** Enter the conversation, sharing your ideas succinctly and with focus. Listen actively and respectfully to the ideas and opinions of others.
- **Volunteer** to be a Discussion Leader: Discussion leaders are needed every week for the peer-led experience to be a success. Coordinators look to study group members to play this important, fun, and rewarding role. Whenever possible, volunteer to be a discussion leader, alone or with a partner.

**Thank you for bringing yourself to this truly unique peer-led learning experience.**

## CHICAGO STUDY GROUPS – MONDAY

BEGINS JULY 11, 2022

## NEW

## Exploring Rosehill Cemetery

HISTORY &amp; GOVERNMENT

*Bob Myers, Colleen Leahy, Evelyn Shaevel, Debra Watkins, Jane Woolley*

Monday, 9:45–11:45 a.m.

This study group will examine part of the history of Chicago through three walking tours in Rosehill Cemetery, one of Chicago's crown jewels. Rosehill Cemetery's Victorian gardens cover 350 acres on Chicago's North Side, adjacent to the Edgewater and Andersonville neighborhoods. Rosehill's gravesites include soldiers and generals from the Civil War, the Volunteer Firefighter's Memorial, Chicago mayors, business tycoons, and victims of the St. Valentine's Day Massacre. Among its residents are: hot dog mogul Oscar F. Mayer; Hall of Fame sportscaster Jack Brickhouse; advertising agency founder Leo Burnett; Western Union founder Elisha Gray; car rental pioneer John Hertz; Chicago philanthropist John G. Shedd; and Sears, Roebuck and Co. founder Richard Sears. In the first week, we will share the history of Rosehill via a Zoom session. In the following weeks, we will explore the cemetery grounds. On the weekly tours, we will divide into subgroups of ten members or less, with a co-coordinator assigned to each subgroup. All study group members will be expected to lead a discussion about one or two gravesites on each walking tour. Please note that each weekly tour will require one to two miles of walking. Study group members must provide their own transportation to the cemetery.



## CHICAGO STUDY GROUPS – TUESDAY

BEGINS JULY 5, 2022

## NEW

## Gawain and the Green Knight as Speculative Fiction

LITERATURE

*James Knapp, Peggy Knapp*

Tuesday, 9:45–11:45 a.m.

King Arthur and the knights of his Round Table have been galloping across movie screens for decades and most recently, Renaissance fairs have given people a chance to participate in a kind of parody of that distant world. But what was medieval adventure and romance really like? In this study group we will read a modern translation of the anonymous *Sir Gawain and the Green Knights*, edited by Brian Stone (Penguin Press, 1974), an English poem widely regarded as among the most impressive of the 14th century. It takes the reader into a world where a huge green man riding an entirely green horse suddenly intrudes on the Christmas feast at King Arthur's court, offering to play what would seem to be a deadly game. Our own century has many examples of fantastic stories, what we now call "speculative fiction"—what would the world be like if...? We will explore the relationship between reality and fiction, and question why we can so easily identify with Gawain, as he travels through an utterly realistic wintertime forest of gnarled trees and frozen waterfalls, and yet arrives at an enchanted castle to play the Green Knight's strange game.



## NEW

**How Did We Sip, Dance, and Stumble  
Our Way to Civilization?**

SCIENCE, TECHNOLOGY, MEDICINE &amp; HEALTH

*William Barker, Barbara Reynolds*

Tuesday, 9:45–11:45 a.m.

Social anthropologists contend that humans' ability to thrive is not due to rugged individualism but connected to culture: our ability to trust each other, cooperate, and find creative solutions together. Drawing on evidence from archaeology, history, cognitive neuroscience, psychopharmacology genetics, social psychology, among others, Canadian Philosophy Professor Edward Slingerland, in his book *Drunk: How We Sipped, Danced, and Stumbled Our Way to Civilization* (Little Brown, 2021), asserts that our taste for chemical intoxicants is not an evolutionary mistake but “a miracle of getting fiercely tribal primates to cooperate and build on the cumulative knowledge of previous generations and other people.” Acknowledging the potential downside risks, Slingerland nonetheless asserts that intoxicants are a “badly needed salve for the only animal on the planet afflicted with self-awareness.” Join us as we discuss Slingerland's theory. To assess whether or not he has made a convincing case, study group participants' attitudes about intoxicants will be anonymously surveyed before and after reading this fast moving, pleasant read.

**Classic Films of the Fifties:****The Last Roles of James Cagney**

CREATIVE ARTS

*Bill McGuffage, Barbara Glass*

Tuesday, 1:15–4:15 p.m.

James Cagney, a product of New York City's rough and tumble Lower East Side, was a popular star of stage and screen for nearly 50 years. Although he was most often associated with gangster movies, Cagney also won critical acclaim for his roles in musicals and comedies during his long acting career. But, in the 1950s, an aging Cagney gave some of his finest performances in *Mr. Roberts* (1954), *Man of a Thousand Faces* (1956), *Love Me or Leave Me* (1955), and *Shake Hands with the Devil* (1959). These are the films that will be shown and discussed in our study group. Join us as we pay tribute to this late and great iconic actor.



## NEW

**Legacy of Excellence: Brass History  
of Chicago Symphony Orchestra**

CREATIVE ARTS

*Denise Stauder, Matt Corey*

Tuesday, 1:15–3:15 p.m.

Join Chicago Symphony Orchestra (CSO) trumpeter John Hagstrom for an in-depth look at the origins of the orchestra's brass section excellence. Famous trumpeters will be discussed and profiled using historical photos and videos. Even a few trumpets will be showcased and demonstrated. Sessions will expand that content for all CSO fans and anyone interested in how quality is passed on from one generation to the next. During this study group, members will participate in discussions about brass development over the years including its German Origins, the building of American symphonies, the Gold Standard for symphonies, and Chicago's Own, the CSO.



## CHICAGO STUDY GROUPS – WEDNESDAY

BEGINS JULY 6, 2022

## NEW

***The Things They Carried*****Chuck Meyers, Dave Anderson****Wednesday, 9:45–11:45 a.m.**

HISTORY &amp; GOVERNMENT

Part history, part fiction, Tim O'Brien's *The Things They Carried* bridges genres. Composed of a series of sometimes free standing, sometimes interconnected stories, *The Things They Carried* (Mariner, 2009) is O'Brien's meditation about ordinary soldiers away from home struggling with the incomprehensible. O'Brien uses real place names and inserts himself into his stories as both narrator and character as he describes his comrades in the American 23rd Division. Join Kiowa, Norman Bowker, "Rat" Kiley, Ted Lavender, and O'Brien as we discuss and reflect on memory and truth, lives lost and decisions made under the influence of Vietnam. The book is available in print, and, if you have Audible Books, Bryan Cranston reads the text followed by O'Brien's journal of his 1993 return to Vietnam.



## NEW

***Zora Neale Hurston: Their Eyes Were Watching God*****Diane Valencia, Nancy Kelly-Martin****Wednesday, 9:45–11:45 a.m.**

LITERATURE

Now considered a classic of African American literature, *Their Eyes Were Watching God* (1937) was dismissed by contemporaries such as Richard Wright who wrote, Ms. Hurston's prose is "cloaked in facile sensuality and simplicity...her novel carries no theme, no message, no thought." This study group will discuss Hurston's skill and artistry as a writer and her prose as truth. As Zora Neale Hurston says in the first sentence of her book, "Ships at a distance have every man's wish on board. For women the dream is the truth—then act and do things accordingly." This lyrical, enigmatic aphorism launches Janie Crawford's own journey from adolescence to adulthood. Male characters and their dreams are also integral to Janie's story. Hurston was an author and an anthropologist, who had an intimate knowledge of the language, customs, and mores of the American Southeast. Join us on a summer journey of possibilities, feelings, and self-discovery. The novel is readily available in print and electronically. Recommended is the 75th Anniversary edition (Harper Perennial Modern Classics, 2006) which features a Forward and Afterword by scholars, Edwidge Danticat and Henry Louis Gates, Jr. respectively. There is also a film version (directed by Darnell Martin, 2005) which is recommended but not required for the study group.



“Fabulous course!!!!  
Thank you Coordinators!!!!

—Mary Jane Sapko

## NEW

**Putin's War and Its Impact on the World**

CONTEMPORARY ISSUES

*Dorothy Balabanos, Stephen Smith*

Wednesday, 1:15–3:15 p.m.

After nearly two years of a pandemic that shook the world, Vladimir Putin added another shock wave by invading Ukraine on February 24, 2022. Since that time, more than 10 million Ukrainians have fled their homes, tens of thousands of Ukrainians have died, with NATO countries and the UN providing support in the form of weapons and billions of dollars. Finland and Sweden, both non-NATO countries, now want to join NATO, raising the possibility of a standoff between NATO countries and Russia. One thing is certain: resolution will not happen quickly. Our study group will begin by exploring the origins of Putin's war using the Frontline documentary *Putin's Road to War* (March 15, 2022). In real-time, we will then examine the state of the war, the humanitarian crisis, Putin's disinformation campaign, and the support of Putin by some American and international leaders and media outlets. We will also discuss the war's impact on food, energy, inflation, mounting concerns of a military escalation and a sharp global economic slowdown. Join us for an eye-opening and thought-provoking learning experience.




---

**CHICAGO STUDY GROUPS – THURSDAY**

BEGINS JULY 7, 2022

## NEW

**Chicago Neighborhoods**

CONTEMPORARY ISSUES

*Joe Hinkel, Dixie Johnson*

Thursday, 9:45–11:45 a.m.

The best way to experience a Chicago neighborhood is from its sidewalks. This study group will include weekly walks through Chicago neighborhoods to appreciate and discuss their history, status, and plans for the future. We plan to visit the old Polish downtown area, Goose Island and Lincoln Yards, Fulton Market, and the Ukrainian Village. We selected these areas because collectively they tell a story of history and revitalization in areas just a few miles from the OLLI Chicago campus. Each location is close to public transportation. This is a physical activity where participants must be able to walk up to two miles on a summer morning. The walks may include visits to museums in the area where there is an admission charge. Prior to each walk we will provide reading materials describing the history of the neighborhood, and its landmarks and plans. Join us. The neighborhoods are fascinating!



“*The course was so good I cannot imagine how it could be improved.*”

—Robert Blatt

## NEW

**Black Mystery Writers***Michael Goodkind, Martha Bills*

Thursday, 9:45–11:45 a.m.

LITERATURE

Join us for another session of Black Mystery Writers. In this study group, we will read and discuss mysteries written by three women and two men. We will read the following books: *Outside The Lines* by Ameera Patel (Modjaji Books, 2020); *Dead Dead Girls* by Nekesa Afia (Berkley Prime Crime, 2021), which takes place in New York; *Rhode Island Red* by Charlotte Carter (Vintage Books, 1997), set in New York; and *Lightseekers* by Femi Kayode (Mulholland Books, 2021), which takes place in Nigeria. These books are available in print and on Kindle. Join us as we explore the interesting plots and memorable characters we will encounter.

**Classic Crime Cinema: Dishonor Among Thieves***Bill McGuffage, Ed Klinenberg*

Thursday, 1:15–4:15 p.m.

CREATIVE ARTS

This study group will focus on capers and heists perpetrated by the smartest and most methodical of criminals—professional thieves who plan and execute the multi-million dollar scores. The highly acclaimed films that will be shown and discussed are: *Rififi* (France 1954), *The Killing* (1956), *The Score* (2002), and *Heist* (2004). Join us for this study of career criminals for whom crime really pays; that is, unless betrayed or double-crossed by dishonorable accomplices.



## NEW

**Sunflowers in Ukrainian Village***Sid Mitchell, Michael Dolesh*

Thursday, 1:15–3:15 p.m.

HISTORY &amp; GOVERNMENT

Can you imagine a more meaningful experience right now than to learn and appreciate the lives of Ukrainians living in Chicago? Join the *Sunflowers in Ukrainian Village* study group as we study when, where, and why the Ukrainian Village was established in Chicago. During the first session, in Wieboldt Hall, we will study the history of Ukraine and be joined by an Ukrainian Village citizen who will share the particulars of one of the fastest-growing and most impassioned neighborhoods in the city. During sessions two, three, and four, we will visit and tour the Ukrainian National Museum, Ukrainian Modern Art Museum, Saint Nicholas Ukrainian Greek Orthodox Cathedral and Saints Volodymyr & Olha Ukrainian Catholic Church, and if time permits, the Holy Trinity Orthodox Cathedral. Following the last session, after some free time to visit shops, we will dine together at the Tryzub Ukrainian Kitchen. Study group members must provide their own transportation. Join us as we learn about, appreciate, support, and have fun with the people of Ukrainian Village.



---

**EVANSTON STUDY GROUPS – MONDAY**

---

BEGINS JULY 11, 2022

***The New Yorker*****CONTEMPORARY ISSUES*****Susan Gaud, Hillis Howie, Mary Watt*****Monday, 9:45–11:45 a.m.**

This study group is for longtime fans of *The New Yorker* as well as newcomers. Each session will examine the contents of the current issue and then explore a previously assigned article in depth. A volunteer discussion leader who has chosen the article will lead the discussion. Conversations are lively. Everyone is expected to lead a discussion once a semester. Participants will be encouraged to briefly discuss current issues from the cover to cartoons and everything in between. An online or print subscription to *The New Yorker* magazine is required.

**NEW****Tenement Tales: Immigrant Life  
in 19th Century New York****HISTORY & GOVERNMENT*****Margot Wallace, Richard Soska*****Monday, 9:45–11:45 a.m.**

On the Lower East Side of Manhattan, a tenement building dating from the 1850s still stands. The Tenement Museum on Orchard Street has restored several original apartments and built a huge archive of documents to tell the stories of families who entered America through the port of New York, raised families in tenements like this one, started businesses, and moved on. In this study group, we will visit families from Germany, Italy, Ireland, and Russia by entering their parlors, kitchens, and workspaces via 20-minute videos prepared by Tenement Museum researchers and educators. Discussion will follow each video, developing an understanding of their lives and the ongoing process of research and documentation. Reading material, distributed each week prior to the study group, will supplement the discussion. Materials are free.



“*Everyone was engaged and shared their insights  
on the material provided in the book.*”

—Phil Goldstick

## NEW

***The Twilight of Democracy:  
The Seductive Lure of Authoritarianism***

CONTEMPORARY ISSUES

*James Smith, Neal Goodfriend*

Monday, 1:15–3:15 p.m.

Throughout the West, liberal democracy has become imperiled from within. Anger and frustration with traditional democracies has given rise to a wave of national populism at whose crest is a new breed of authoritarian strongman who uses the ballot box to empower “illiberal democracy.” In *Twilight of Democracy: The Seductive Lure of Authoritarianism* (Doubleday, 2020), Pulitzer Prize-winning historian Anne Applebaum focuses on the enablers of this new wave of authoritarians, the people who polish their images, construct their messages, and provide their intellectual support. In this study group, we will discuss the part personal memoir, part intellectual history, *Twilight of Democracy*. This book seeks to explain how many intellectuals and influencers in Europe and the U.S. who, at the beginning of the century, shared a common Western outlook, became alienated, resentful, and divisive outliers of the Right and the Left. These individuals became the followers and assistants of politicians on the Left and Right to whom democracy took a back seat to the implementation of nativist, xenophobic, and divisive agendas. Along the way, Applebaum provides personal insights of her relationship with an impressive gallery of scholars and politicians. Join us for a strange and troubling voyage through the first twenty years of 21st century political and intellectual thought and a deeply insightful read.



## EVANSTON STUDY GROUPS – TUESDAY

BEGINS JULY 5, 2022

## NEW

***Seneca Falls and the Origins of  
the Women’s Rights Movement***

HISTORY &amp; GOVERNMENT

*Jerry Bernstein, John Drodow, Roberta Rakove*

Tuesday, 1:15–3:15 p.m.

In July of 1848, a group of women and men met at Seneca Falls, New York to discuss women’s rights. Today we mark this convention as the beginning of the women’s rights movement. Such was the state of public opinion in 1848 that a man presided at the convention “since no woman could imagine presiding before a mixed audience.” Many of us have heard of the convention and know that it was attended by some of the major figures of women’s rights, human rights, and abolition movements. Who were these women and what was their mission? What were women’s conditions in the United States from colonial times up to the convention? What happened for women’s rights after the convention? *Seneca Falls and the Origins of the Women’s Rights Movement* by Sally G. McMillen (Oxford University Press, 2009) addresses the convention, the status of American women before the convention, and the progress of the movement through the 19th century. We will focus on four women—Elizabeth Cady Stanton, Lucy Stone, Lucretia Coffin Mott, and Susan B. Anthony. Join us in discussing and getting to know these extraordinary women and the movement for profound social change they unleashed.



---

**EVANSTON STUDY GROUPS – WEDNESDAY**

---

BEGINS JULY 6, 2022

**Creative Writing Workshop****CREATIVE ARTS***Arthur Altman, Bob Jenkins*

Wednesday, 9:45–11:45 a.m.

This study group is for members who love words and who wish to improve and practice their creative writing skills across the various genres: poetry, creative nonfiction, essay, memoir, and fiction. Participants will present their work to the group who will respond with encouragement, critique, and suggestions. Revisions and resubmissions are encouraged. Longer works may be submitted in segments. This workshop will give you a creative outlet and an opportunity to produce a finished piece of writing of which you can be proud.



---

**EVANSTON STUDY GROUPS – THURSDAY**

---

BEGINS JULY 7, 2022

**NEW****The New York School Poets****LITERATURE***Matthew Corey, Joan Cohan*

Thursday, 1:15–3:15 p.m.

Join us as we tour New York City with the New York School Poets. In this study group, we will consider the history and development of individual members of the group, as well as their relationships to each other, their relationship to the Abstract Expressionist painters, their relationship to New York City itself, and their lasting legacy. Our text will be *The Last Avant-Garde: The Making of the New York School of Poets* by David Lehman (Anchor, 1999), which will be supplemented with close readings of many poems by the members of the NY School: John Ashbery, Kenneth Koch, Frank O'Hara, James Schuyler, and Barbara Guest. The book is widely available in the new or used book market, and all poems will be distributed as either handouts or web links.



“*The best part of the study group was the enthusiasm of the participants and the depth of the discussion provided by them.*”

—Hilmon S. Sorey Jr.

VIRTUAL STUDY GROUPS – MONDAY

BEGINS JULY 11, 2022

**Tevey the Dairyman: Stories by Sholem Aleichem**

LITERATURE

*Julia Katz, Mary Minow, Newt Minow*

Monday, 9:45–11:45 a.m.

If you liked *Fiddler on the Roof*, this study group is for you. Read and discuss the original stories by Sholem Aleichem about Tevey and his daughters. The stories are set near the fictional village of “Anatevka” based on Aleichem’s birthplace. Set near Kyiv, Ukraine, the area was then a part of the Russian Empire. Meet Tevey’s daughters and read their trials and tribulations. Observe how Aleichem’s stories shift in tone, as they are written over the period 1895 to 1916, with pogroms (violent riots) intensifying against the Jews. Aleichem left his country in the midst of writing these stories, wandering through Europe and ending up in New York. Noted for his many Yiddish stories of life in the shtetl, this popular author was sometimes called “the Jewish Mark Twain.” The interconnected stories of *Tevey the Dairyman* are among his most beloved. Translator Aliza Shevrin adds Talmudic quotations to the text to help the reader better understand Tevey’s colorful “interpretations.” Our text is *Tevey the Dairyman and Motl the Cantor’s Son* (Penguin Classics, 2009) by Sholem Aleichem.



**The New Yorker Magazine 1920s to Present**

CONTEMPORARY ISSUES

*Dale Melin Walters, Laura Sunderlin, Marylyn Miller*

Monday, 1:15–3:15 p.m.

*The New Yorker* magazine has always been dedicated to quality, topical writings, and ideas. *The New Yorker* is fast approaching its 100th anniversary (1925–2025). Join us as we look at some of the best articles and stories of the past. We will review two articles per study group and invite you to lively and fascinating discussions of essays from the 1920s through the 2000s, often comparing them to issues of today. A current digital subscription to *The New Yorker* is helpful as we will be pulling archives from years gone by. Article suggestions are always appreciated and we welcome you to lead a discussion on your favorite era. Our study group parley will be as varied as the contents of this distinguished magazine.



“One of the best things about OLLI  
is the interaction with bright people . . .  
I think I learn as much from the discussions  
as from the books themselves.

—Laura Ann Wilber

**NEW**

***Romeo & Juliet* and *Tony & Maria***

*Beverly Snell, Jerry Specht*

**Monday, 1:15–3:15 p.m.**

**CREATIVE ARTS**

From Shakespeare to Spielberg, *Romeo and Juliet* is the classic romantic tragedy, with star-crossed lovers, feuding families and friends, and devastating results. In this study group, we will compare and discuss four very different film treatments. We will start with *Romeo and Juliet* directed by Franco Zeffirelli (1968). This is a period production starring Leonard Whiting and Olivia Hussey. Next up will be *William Shakespeare's Romeo and Juliet* directed by Baz Luhrmann (1996), starring Leonardo DiCaprio and Clare Danes. This film preserves the classical language, but is set in urban Verona Beach, complete with Mafia families. Then we will move to a mid-1950s blue-collar neighborhood on the Upper West Side of Manhattan in *West Side Story*, directed by Jerome Robbins (1961) with music by Leonard Bernstein and lyrics by Stephen Sondheim. Our final selection will be another *West Side Story* directed by Steven Spielberg (2021). It retains the Bernstein and Sondheim musical numbers, but is closer to the original stage musical than to the 1961 film. We will watch the films at home—all available via the library and streaming—then meet and discuss whether we agree with the Prince that “...never was a story of more woe, than this of [Maria] Juliet and her [Tony] Romeo.”



**VIRTUAL STUDY GROUPS – TUESDAY**

BEGINS JULY 5, 2022

**NEW**

***The South Side: A Portrait of Chicago and American Segregation***

*Connie Karduck, Mary Jo Huck*

**Tuesday, 9:45–11:45 a.m.**

**CONTEMPORARY ISSUES**

In her book, *The South Side: A Portrait of Chicago and American Segregation* (Picador, 2016), journalist Natalie Moore writes deeply and lovingly about the South Side of Chicago. Her book is still relevant today, showing us that we cannot talk honestly about problems such as violence and unemployment without addressing segregation. A diverse city cannot be accomplished without neighborhood diversity. Just look at this city we love. Though she grew up in the black middle-class neighborhood of Chatham, where her parents—college graduates and homeowners—worked as professionals, Ms. Moore notes that they and their neighbors were shut out from most of the benefits and resources American society offers. And, at eight years of age, she experienced the violence that visits the South Side. This book is based on personal experience, but it is primarily factual and heavily documented to reveal the political, cultural, and economic conditions of South Side Chicago. It also offers input and recommendations from other South Side and West Side residents. In lively discussion, members of the study group will learn, as Ta-Nehisi Coates has said, “Moore’s book is essential to anyone attempting to understand race in Chicago, our most American of cities.”



**NEW**
**Exploring the Visual Arts**
**CREATIVE ARTS**
*Bridget Stump, MaryJon Girard, Roger Heuberger*
**Tuesday, 9:45–11:45 a.m.**

This summer we will explore an Empress, a museum of modern art curator, and a treasure trove of modern art. In the 1970s, Donna Stein became the art advisor to the last Empress of Iran. So began a collaboration to create a legacy collection. What pieces would establish Tehran as a world-class destination for art? The main reference for this study group is *The Empress and I: How an Ancient Empire Collected, Rejected and Rediscovered Modern Art* by Donna Stein (Skira, 2021). This book explores cultural relevance and the art world. It is a vivid account of a cross-cultural initiative. Donna Stein's narrative opens the door to a time in history; it inspires our exploration of art in this region of the world. Each week we will make our way through her book with supplemental materials to enrich our discussions. Our study group will look deeper into the role these women played in the art world, the pieces they acquired, and the creative work in this region today.


**NEW**
**Five Days with Winston Churchill—May 1940**
**HISTORY & GOVERNMENT**
*Randy Smith, Calvin Mouw*
**Tuesday, 9:45–11:45 a.m.**

There were many pivotal moments during World War II, but none more dramatic or essential to the ultimate Allied victory than the period from May 24–28, 1940. *Five Days in London: May 1940* (Yale University Press, 2001) by John Lukacs provides a fascinating and almost hour-by-hour account of those crucial days. Lukacs reconstructs how Winston Churchill, who had become Prime Minister only two weeks earlier, and the rest of the British cabinet grappled with some of the most difficult decisions of the entire war. Based on comprehensive research and previously classified materials, Lukacs weaves the tale like a spellbinding novel. This study group will rely primarily on Lukacs' book, which is available in paperback. Join us for a lively discussion of the roles played by the main characters and the brave decisions made by Churchill despite incredible military pressures and internal dissension.


**Tuesday at the Movies**
**CREATIVE ARTS**
*Michael Pierce, Hillel Furlager, David Buffen*
**Tuesday, 1:15–3:15 p.m.**

This summer, we continue our love affair with the movies, focusing on four performances by Meryl Streep. Streep holds the record for the most Academy Award nominations of any actor, having been nominated 21 times—17 for Best Actress and 4 for Best Supporting Actress. She has won three times for her work in *Kramer vs. Kramer* (1979, Robert Benton), *Sophie's Choice* (1982, Alan Pakula), and *The Iron Lady* (2011, Phyllida Lloyd)—all of which will be reviewed and discussed in our study group—making her the fifth actor to win three competitive acting Academy Awards. In addition, we will view and discuss the film *The French Lieutenant's Woman* (1981, Karel Reisz) for which she received a nomination for Best Actress. In 2012, Streep became the most nominated performer in Golden Globe Awards history with 23 nominations. We will watch each week's movie in advance of the study group; participants must obtain the movies on their own, which can usually be found through a streaming service, and range in rental cost from \$0–\$3.99. Each movie will be presented by a study group member who will volunteer to lead the discussion.



VIRTUAL STUDY GROUPS – WEDNESDAY

BEGINS JULY 6, 2022

**Capturing Chicagoland Through Photography**

CREATIVE ARTS

*Richard Fisher, Howard Frank*

Wednesday, 8:45–11:45 a.m.

This study group will combine virtual sessions and group outings to allow members to improve their photographic skills. Study group members are encouraged, though not required, to join other study group members to accomplish the assignments together. Photographic assignments will take advantage of outdoor experiences and feature different photographic techniques. Study group members are encouraged to identify areas where they wish to improve their photography skills. This study group is open to OLLI members of all skill levels. The requirements are a digital camera where the exposure can be adjusted (ideally with a manual exposure mode), a computer (PC or Mac), basic computer skills, and access to and basic knowledge of photographic editing software such as Photoshop, Lightroom, or Photoshop Elements. Our time will be split among image review, discussion of photographic techniques and post-processing methods, sharing of tips and tricks, discussion of upcoming field exercises, and study group member presentations. Study group members will be encouraged to present a favorite photographer, an interesting photographic technique, or an unusual place to photograph.



**Foreign Affairs**

CONTEMPORARY ISSUES

*Gary Benz, Gene Mackevich, Eileen Holderbaum, Rob Carr*

Wednesday, 9:45–11:45 a.m.

This study group is made up of fellow members who love to read and have a desire to learn about the countries of the world through their interactions with one another. We encourage and attract people who have inquisitive minds and are serious about learning and exchanging ideas. We take pride in being inclusive and non-intimidating by conducting discussions that are welcoming and tolerate a wide range of opinions that are documented and convincingly expressed. We start with material from *Foreign Affairs*, a bimonthly magazine published by the Council on Foreign Relations, but we don't stop there. Discussion leaders may supplement weekly readings with materials from think tanks (such as Brookings), mainstream periodicals (such as *The Economist*, *Financial Times*, *Wall Street Journal*, *The New York Times*), and topical books. The goal of this study group is to be interactive with a healthy exchange of ideas, while still being fun and rewarding. In doing so, we will create our own “think tank” and try to resolve problems and world issues. If you're intrigued, join us.



“ The best parts of the study group . . .  
group discussion and study group leaders.

—Yale Sage

## Economist B

### CONTEMPORARY ISSUES

*Dianne McCallum, Phyllis Fischel*

Wednesday, 1:00–3:15 p.m.

If you are interested in joining a small group, then the Economist B might be just what you have been looking for. We keep the group small to ensure that all voices will be heard. *The Economist* magazine offers a scope broader than the U.S., with news stories renowned for their information and thought-provoking reporting on political and economic developments around the world—which is so important today. We will discuss six to eight articles selected from the current week’s issue. Weekly volunteers will lead the very lively discussions which respect our varied backgrounds and opinions. You might even find that you change your opinion on occasion. Access to current print or digital editions of *The Economist* is required. The digital version is recommended due to potential delivery issues. Subscriptions are available at 800-456-6086 or [www.economistsubscriptions.com](http://www.economistsubscriptions.com).



## Front Page Stories from Sunday’s *New York Times*

### CONTEMPORARY ISSUES

*Mitchell Harrison, Allan Slobodin*

Wednesday, 1:15–3:15 p.m.

For more than 100 years *The New York Times* has been considered the newspaper of record. It covers New York, national, and international stories and is widely quoted across the globe. Its front page often includes prize-winning photographs and usually features six stories which are continued in-depth inside the paper. In this study group, we will discuss articles from the previous Sunday’s edition. Join us as we learn, smile, and scratch our heads during great and lively discussions. Access to *The New York Times* (print or digital) is required.



## NEW

## The Fourth Estate in Film

### CREATIVE ARTS

*Jerry Salzberg, Arni Miller*

Wednesday, 1:15–3:15 p.m.

The setting for numerous films throughout the history of the moving image has been the Fourth Estate. Deadlines, intrepid reporters, high-minded publishers, loyalty to the truth and the First Amendment with hijinks in and out of the newsroom have been featured. In this study group, we will view and discuss *The Post* (2017), *Good Night and Good Luck* (2005), *Libeled Lady* (1936), and *Call Northside 777* (1948). Each week a study group member will volunteer to present a short introduction to that week’s film with questions for discussion. The introduction may be the production history of the film, short cast biographies or any other topic that will enhance the viewing and discussion of the film. Use of video is welcomed but not necessary or required. The ability to navigate Canvas and to view each film through a streaming service or other medium is required as members will watch the film at home prior to coming to the discussion. Comments, opinions, and anecdotes are welcomed and encouraged.



VIRTUAL STUDY GROUPS – THURSDAY

BEGINS JULY 7, 2022

NEW

**Haiku: Capturing the Essence**

CREATIVE ARTS

*Judith Myers, Susan Ataman*

Thursday, 9:45–11:45 a.m.

Haiku is a poetry form that has been described as “a medium designed to lead us to wisdom and calm.” Often regarded as very simplistic, and sometimes taught in grade school, haiku is capable of capturing “the essence of a moment keenly observed in which nature is linked to human nature.” When written in or translated to English, haiku usually has three unrhymed lines with no more than 17 syllables. In this study group, we will learn about the origins of Japanese haiku and explore some variations in structure and form through reading and discussion. We will begin the journey with the old Masters from Japan (Basho, Buson, Issa, Shiki), and move on to the experimentation with haiku among Western Imagists. We will include in our journey a discussion of haiku by writers as unexpected as Ezra Pound, Jack Kerouac, Richard Wright, and Sonia Sanchez. We will also have opportunities to try our hand at writing haiku individually and collaboratively. We will use as a text, *The Haiku Handbook*, 25th Anniversary edition, William J. Higginson & Penny Harter, eds (2013). Join us as we visit the unique art form of haiku.



NEW

**1953: What Happened to Democracy in Iran**

HISTORY & GOVERNMENT

*Bob Jenkins, Philip Zawa*

Thursday, 9:45–11:45 a.m.

In 1953 the CIA overthrew Iran’s fledgling democracy, returning the Shah to power, and restoring British control of Iranian oil. What really happened? Who were the stakeholders and players? What were the long-term impacts on Iran, the United States, and the Middle East? Can regime change work? Our study group will examine these questions by discussing Stephen Kinzer’s best selling, non-fiction thriller, *All the Shah’s Men: An American Coup and the Roots of Middle East Terror* (Wiley, 2nd edition, 2008, ISBN-13 978-0470185490). Kinzer’s narrative was corroborated in August 2013, when the CIA released previously classified government documents acknowledging the coup was carried out “under CIA direction” and “as an act of U.S. foreign policy, conceived and approved at the highest levels of government.” Kinzer outlines Iran’s glorious history up to and through the exploitation by the British Empire, and then through the Iranian Revolution, which resulted in the current oppressive anti-American regime. The author relates how the “successful” 1953 Iranian coup became the template for a string of CIA directed coups starting with the 1954 Guatemalan coup. Peer discussion of this case study of regime change should be lively.



## The Economist

## CONTEMPORARY ISSUES

John Howard, Stuart Applebaum, Jennifer Gainer  
Thursday, 1:15–3:15 p.m.

*The Economist* weekly magazine is widely acclaimed for its thoughtful and stimulating analyses of world news, politics, and business. It also has sections on science, technology, books, the arts, and extensive reports on particular issues of current interest. Each week our study group holds a lively discussion based on articles selected from that week's edition. Each participant is encouraged, during one of our sessions, to select articles from the current issue and lead our discussion. A digital subscription to *The Economist* is required. Information on subscriptions and a reduced introductory rate is available at 1-800-456-6086 or [www.economistsubscriptions.com](http://www.economistsubscriptions.com).



## Science Times

## SCIENCE, TECHNOLOGY, MEDICINE & HEALTH

Brenda Russell, Valerie Maragos, Mark Levin  
Thursday, 1:15–3:15 p.m.

Do you want to discuss the latest developments in science? For the last 40 years, *The New York Times* has had an extensive section on scientific subjects. Topics cover a broad range of science and technology, as well as health and medicine. The articles make the reader sit up and take notice by calling attention to new, surprising, or under-reported scientific developments. Members of this study group will be asked to select, research, and lead discussions. Articles come from a recent Tuesday *Science Times* or from articles elsewhere in *The New York Times* with topical scientific interest. Scientific background is not needed; just bring your curiosity and interest for any and all things science. A digital or print subscription to *The New York Times* is required. We learn and we laugh together. Join us for some great discussions.




---

## VIRTUAL STUDY GROUPS – FRIDAY

BEGINS JULY 8, 2022

---

## NEW

## How Democracies Die

## CONTEMPORARY ISSUES

Joel Weiss, David Borosh  
Friday, 9:45–11:45 a.m.

Have you ever wondered why some democracies die? If so, this is the study group for you. Our readings (provided by the co-coordinators) will be selected excerpts from the 2018 bestseller *How Democracies Die* by two Harvard professors of government Steven Levitsky and Daniel Ziblatt. We will examine various countries, emphasizing the U.S. To understand the variety of challenges democratic nations confront, we will study examples of violent, non-violent, constitutional, and extra-constitutional assaults that democracies have faced. Time and again the course material will show that a serious challenge to democracy is rarely perceived as such at the time it begins. Somewhat counterintuitively, we will also learn and discuss how a societal development which has many good features may also eventually manifest other features that can endanger democracy. Thankfully, not all assaults on democracies are successful, as we will learn by studying how some challenges were defeated. Join us for a discussion on how to better understand the warning signs of assaults on democracies, how some existing dangers arose from initially benign developments, and how threats may be overcome before it is too late.



# Technology Overview

For all virtual study groups, members will use their Northwestern NetID and password to access Canvas. Within Canvas, members will use the provided Zoom links to enter their virtual classroom. Some study groups (virtual and in-person) will also use Canvas to post additional resources.

## To Access Canvas, remember:

- New members will be issued a NetID with instructions on how to activate.
- Current members have a NetID and password. Email [olli@northwestern.edu](mailto:olli@northwestern.edu) if you do not remember your NetID and password.

## NORTHWESTERN UNIVERSITY SYSTEMS EXPLAINED:

### 1. AUGUSOFT

OLLI Online Registration System

### 2. CANVAS

Northwestern's Learning Management System

### 3. ZOOM

Videoconferencing application used by Northwestern

Each system's purpose and access instructions are outlined below.

Note: OLLI members have a separate **username** and **password** for **Augusoft** and **Canvas**.

Use the space below to keep your login and password information easily accessible.

## AUGUSOFT

Username

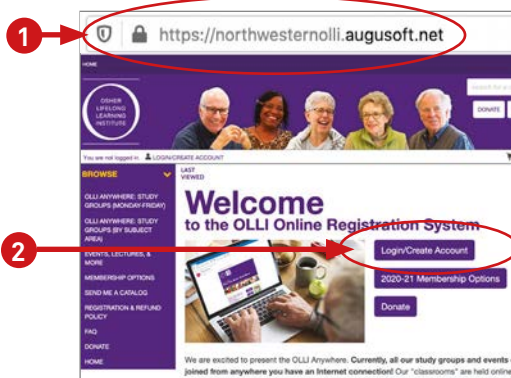
Password

### What you can do here:

- Purchase **Membership**
- **Register** for Study Groups and Events

### To Access Augusoft:

- (1) Go to: [northwesternolli.augusoft.net](https://northwesternolli.augusoft.net)
- (2) Click the purple **LOGIN/CREATE ACCOUNT** button.
- (3) In the **Sign In** box, select **Student** from the dropdown menu. Type your **Username** and **Password**.



## CANVAS & ZOOM

NetID

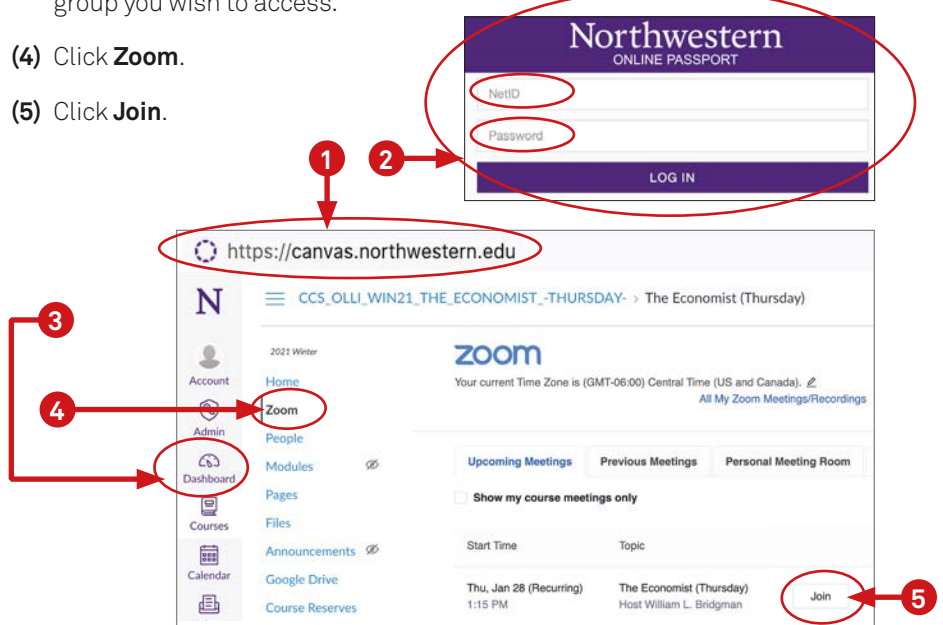
Password

### To Access Canvas and Zoom:

- (1) Go to: [canvas.northwestern.edu](https://canvas.northwestern.edu)
- (2) The **Northwestern Online Passport** screen appears. Enter your **NetID** and **Password**.
- (3) This will bring up the **Canvas Dashboard**. Click the study group you wish to access.
- (4) Click **Zoom**.
- (5) Click **Join**.

### What you can do here:

- Access your **Zoom classroom** for virtual study groups for which you are registered.
- Access **additional content** (discussion questions, syllabus, etc.) for virtual or in-person study groups which utilize Canvas in this way.
- Access the **OLLI Student site** which contains tips, tools, and resources for being a successful Northwestern OLLI student.





# SUMMER MEMBER EVENTS

## Beyond the Classroom: **OLLI Ventures Out!**



### **A Day of Mexican Art & Culture in Pilsen** **Friday, July 8, 10:00 a.m.–2:00 p.m.**

**Location:** Meet at National Museum of Mexican Art

National Museum of Mexican Art docent-led tour; guided Murals Of Pilsen walking tour; Fiesta Lunch with fellow OLLI classmates.

[Click here](#) to register. \$10 fee (does not include lunch).  
Space is limited. Only a few spots remain.



### **OLLI at the Grant Park Music Festival** **Wednesday, July 13, 5:00 p.m.**

**Location:** Jay Pritzker Pavilion in Millennium Park

Bring a chair, your own food and drink, and your interest in socializing with other OLLI music lovers — what could be better?

[Click here](#) to register. No fee.



### **SC Johnson Campus Tour** **Tuesday, August 2, 8:30 a.m.–4:00 p.m.**

**Location:** Chartered bus from Chicago and Evanston to Racine, Wisconsin

Tour Frank Lloyd Wright-designed buildings; lunch at The Maple Table; Racine Danish Kringle stop if time allows

[Click here](#) to register. \$25 fee (does not include \$18 lunch).  
Space is limited.

Events are open to all current OLLI members. Registration through your OLLI Online Registration account is required.

# 2021–2022 POLICIES AND STANDARDS OF CONDUCT

## Registration Policies & Expectations

Participation in the OLLI program is based on membership. Membership allows you to join a given number of study groups in a session/semester (varies by membership level). Membership also gives you access to lectures, workshops, enrichment opportunities, and other benefits through Northwestern.

### REGISTRATION

- You **MUST** be officially registered through the OLLI office for all study groups and bonus groups you attend. If you drop a study group or bonus group you must notify the OLLI office.
- Registration for study groups is on a first come, first served basis. If a study group is full, members will be placed on a waiting list and will be notified if a space becomes available. Should space become available, members will be added to a study group in the order in which they have been wait listed. There are no exceptions.
- We **CANNOT** accept registration by mail, email, phone, fax, or drop off.
- OLLI accepts credit card payments through our online registration system only. Visa, Mastercard, American Express, or Discover are accepted.
- Unless otherwise noted, you must be a current member of OLLI to register for OLLI events.
- Trial memberships are available only to new members and may be purchased only one time.
- Refunds cannot be issued for unused membership benefits.

### REGISTRATION ADD/DROP

- **Please make your selections carefully. Changes to study group selections may ONLY be made by the OLLI office.** Changes cannot be made during the first two weeks of registration. Changes may take up to one week to process and are subject to study group availability.
- Changes may only be made up to the end of the second week of the fall or spring semester or the first week of winter or summer session.

## Refund Policies

**UNUSED MEMBERSHIP BENEFITS:** Refunds are **NOT issued** for unused membership benefits. If you are unsure of your plans for the year, we recommend that you purchase a half-year membership.

**EVENTS:** Refunds are **NOT issued** for academic enrichment or social events, including but not limited to prepaid meals, theater tickets, and prepaid tours.

**EXTRAORDINARY CIRCUMSTANCES:** Issuance of refunds for extraordinary circumstances are at the discretion of the OLLI Director.

**METHOD:** Qualifying refunds must be issued in the exact form as payment was made (i.e. to the same credit card that was used to pay for the transaction). No exceptions. Allow 12 weeks for processing.

**NEW MEMBERS ONLY:** If you participate in OLLI at Northwestern University for the first time and find that this program is not a good match for you, you may be eligible for a full or partial refund under the following circumstances:

- If you started in the fall or spring semester and you notify the OLLI Director in writing **within two weeks** of the start of the semester.
- If you started in the winter or summer session and you notify the OLLI Director in writing **within one week** of the start of the session.

## Attendance Policies & Expectations

**OLLI Membership is based on the expectation that you will register for, attend, and actively participate in the number of study groups allowed with your membership type and based on the offerings in any given session/semester.**

- Members who are unable to attend the **first two weeks** of the fall or spring semester are required to notify the study group coordinator of their absence, and (if possible) provide an expected date of return to the study group. Members who fail to notify their study group coordinator of their absence may be dropped from the study group at the end of week two.
- Members who are unable to attend the **first week** of the winter or summer session are required to notify the study group coordinator of their absence, and (if possible) provide an expected date of return to the study group. Members who fail to notify their study group coordinator of their absence may be dropped from the study group at the end of week one.
- Members who sign up for a study group and fail to attend at least half the scheduled sessions may be refused registration/membership in the future.
- If you require special accommodations, please contact the OLLI office **prior** to registration.
- RSVP carefully to events and workshops, understanding that while there may be costs associated with non-attendance to you, that these costs also adversely impact the program.
- OLLI prohibits video recording of any study group by members or coordinators.

## STANDARDS OF CONDUCT

As members of the Northwestern community, OLLI members are expected to behave with each other with civility and respect, recognizing that disagreement and informed debate are valued in an academic community. Demeaning, intimidating, threatening, or violent behaviors will not be tolerated. Such behavior could result in dismissal from the program.

**The Northwestern University Student Handbook can be viewed at:**  
[sps.northwestern.edu/student-handbook](https://sps.northwestern.edu/student-handbook)

## Northwestern's Policy on Discrimination and Harassment

Northwestern University does not discriminate or permit discrimination by any member of its community against any individual on the basis of race, color, religion, national origin, sex, pregnancy, sexual orientation, gender identity, gender expression, parental status, marital status, age, disability, citizenship status, veteran status, genetic information, reproductive health decision making, or any other classification protected by law in matters of admissions, employment, housing, or services or in the educational programs or activities it operates. Harassment, whether verbal, physical, or visual, that is based on any of these characteristics is a form of discrimination. Further prohibited by law is discrimination against any employee and/or job applicant who chooses to inquire about, discuss, or disclose their own compensation or the compensation of another employee or applicant.

Northwestern University complies with federal and state laws that prohibit discrimination based on the protected categories listed above, including Title IX of the Education Amendments of 1972. Title IX requires educational institutions, such as Northwestern, to prohibit discrimination based on sex (including sexual harassment) in the University's educational programs and activities, including in matters of employment and admissions. In addition, Northwestern provides reasonable accommodations to qualified applicants, students, and employees with disabilities and to individuals who are pregnant.

Any alleged violations of this policy or questions with respect to nondiscrimination or reasonable accommodations should be directed to Northwestern's Office of Equity, 1800 Sherman Avenue, Suite 4-500, Evanston, Illinois 60208, 847-467-6165, [equity@northwestern.edu](mailto:equity@northwestern.edu).

Questions specific to sex discrimination (including sexual misconduct and sexual harassment) should be directed to Northwestern's Title IX Coordinator in the Office of Equity, 1800 Sherman Avenue, Suite 4-500, Evanston, Illinois 60208, 847-467-6165, [TitleIXCoordinator@northwestern.edu](mailto:TitleIXCoordinator@northwestern.edu).

A person may also file a complaint with the Department of Education's Office for Civil Rights regarding an alleged violation of Title IX by visiting [www2.ed.gov/about/offices/list/ocr/complaintintro.html](http://www2.ed.gov/about/offices/list/ocr/complaintintro.html) or calling 800-421-3481. Inquiries about the application of Title IX to Northwestern may be referred to Northwestern's Title IX Coordinator, the United States Department of Education's Assistant Secretary for Civil Rights, or both.

### AVOIDING MICROAGGRESSIONS

To reduce the possibility of unintended harm to fellow OLLI members and to help OLLI be fully inclusive, we encourage all members to educate themselves on microaggressions and be mindful of this information as they engage in OLLI classrooms. Microaggression education can be found in the [Student Canvas](#) site which all members are encouraged to review.

## NORTHWESTERN OLLI MEMBER EXPECTATIONS AND COVID-19 CODE OF CONDUCT

The well-being of our Northwestern OLLI community is our highest priority. Northwestern OLLI has developed the following expectations for all OLLI members who return to campus or participate in any OLLI program (even remotely). Northwestern OLLI may modify these expectations at any time as guidance from federal, state, and local governments and/or the University evolves. Substantive modifications will be communicated to you. As a reminder, in addition to the expectations set forth below, all members are expected to follow policies applicable to members, including those contained in the NU Student Handbook and the OLLI program documentation.

I agree to the following:

- I will regularly monitor the University's guidelines related to COVID-19 on the COVID-19 site and stay updated on any guidance provided by the University.
- While on campus I will abide by safety or hygiene standards recommended by Northwestern and any applicable agencies, including the Illinois Department of Public Health or the Centers for Disease Control and Prevention (CDC). For example, standards regarding social distancing, limiting gatherings, hand washing and sanitizing, and cleaning shared surfaces.
- If mandated by Northwestern University, I will wear a mask or face covering in all public and shared environments on campus and whenever required by the University, unless I have a medical condition that restricts my ability to do so. I understand that the face covering must meet guidelines from the CDC and Northwestern's guidance.
- I understand that I may be asked to submit to COVID-19 testing and will comply with COVID-19 testing requirements and treatment recommendations.
- I will cooperate with any contact tracing efforts by the University.
- I will perform and document any self-monitoring or self-screening of health symptoms that the University asks me to complete, including monitoring my personal health daily and reporting any conditions as required by the University.
- I will participate in any additional health screening required by the University.
- I will immediately report any exposure to COVID-19 to the OLLI office, and will not participate in in-person OLLI activities until I am cleared by the University.
- I will follow the University's guidelines on self-isolation and/or quarantining and any applicable guidelines or requirements from public health agencies, including any guidance regarding self-isolation and/or quarantining for individuals who have traveled outside of the United States and/or the State of Illinois.
- I will complete training programs related to COVID-19 provided by the University.

I have read and understand this summary of expectations and agree to follow all Northwestern University guidelines related to reducing the spread of COVID-19. If I do not follow these expectations, I may be referred to the OLLI office for follow up and the consequences of regular noncompliance may include removal from the OLLI program. I understand these expectations may change given the evolving nature of the pandemic. I further understand that if I have questions, I can raise them with the OLLI office and/or the appropriate University office.

I understand and acknowledge that while Northwestern is continuing to clean, sanitize, and engage in other best practices, and that Northwestern is continuing to follow the guidance of public health officials to help prevent the contracting and spread of COVID-19, much of the nature of the COVID-19 virus is still unknown (including potential long term health effects), and Northwestern cannot control risks associated with COVID-19 or guarantee that the campus (including any building) is free of the virus, or that I or my belongings will not be exposed to COVID-19, and that such exposure may result in illness and/or a disruption to my OLLI experience. I recognize that individuals with the following conditions may have a higher risk from COVID-19 infection: age 65 or older, HIV, asthma, chronic lung disease, diabetes, serious heart condition, chronic kidney disease being treated with dialysis, severe obesity, immunocompromised, and certain pregnancy related conditions. I also understand that information suggests there may be heart or lung complications affiliated with COVID-19. I understand that if I am diagnosed with COVID-19 or was in close contact with someone with COVID-19 I should seek consultation from a medical provider and receive medical clearance before returning to any OLLI activities.

I understand and acknowledge that OLLI is planning for many study groups and events to take place in person in the upcoming term, while some study groups will continue to be virtual. However, in-person study groups are dependent upon evolving health guidelines and space availability. Accordingly, if safety conditions change, some or all events may be cancelled or postponed, and in-person study groups may shift to virtual experiences. Such changes will be communicated to members by OLLI or the University. Membership dues and fees will not be refunded or prorated in these circumstances.

I understand and acknowledge that Northwestern may need to make additional sudden changes to the campus environment – including requiring members to leave campus.

I understand and acknowledge that I have informed awareness of these risks and share the responsibility for minimizing risk of exposure to and spread of COVID-19 to myself and others, and that I am voluntarily resuming my OLLI experience.



# MEMBERSHIP INFORMATION AND REQUIREMENTS

## HEALTH & SAFETY REQUIREMENTS AND INFORMATION

### Information on Vaccinations, Masks, Social Distancing, Ventilation and Cleaning, Food and Drink.

COVID-19 guidelines are changing rapidly. Safeguarding the health and safety of our members and staff remains top priority. Northwestern OLLI continues to listen to the science and follow CDC guidelines, state mandates, and Northwestern policies related to all COVID-19 safety protocols. If these guidelines, mandates, or policies change, Northwestern OLLI will adjust accordingly.

### Vaccinations

#### OLLI MEMBERS:

During registration, OLLI members will be required to attest to being fully vaccinated and boosted. *[I hereby attest that I have been fully vaccinated for COVID-19 with an FDA- or WHO-authorized vaccine and have also obtained a COVID-19 booster (by March 7, 2022, or 30 days after becoming eligible, whichever is later), or that I have one of the following two vaccine exceptions: a documented health condition or a sincerely held religious belief. If I have a vaccine exception, I commit to wearing a mask at all times while on campus and completing testing as required.]*

Attestation is a legal acknowledgement of authenticity. At this time, proof of vaccination is not required, however proof of vaccination could be required in the future. All members will be required to attest even if they select only virtual study groups, as they could be on campus for programming or other services such as the University library.

#### NORTHWESTERN STAFF AND DEGREE-SEEKING STUDENTS:

All OLLI staff members have been vaccinated against COVID-19 and received boosters. Northwestern requires all faculty, staff, and students to be vaccinated and boosted, subject to limited exceptions. Unvaccinated staff, faculty, or degree-seeking students who are on campus are required to complete regular COVID-19 testing, complete the daily symptom tracking, and wear a mask in all shared indoor settings.

### Social Distancing

- Classrooms and Common Areas: According to State mandates, CDC guidelines, and Northwestern policies, there are currently no social distancing restrictions in classrooms or common areas.
- Elevators:
  - o CH: No current limitations.
  - o EV: Elevators are currently limited to four people. Stairwells are locked for security reasons.

### Masking

At this time masks are not required inside Northwestern buildings. For those who choose to wear a mask, in response to information about the effectiveness of different types of masks, Northwestern recommends wearing a high-quality mask—at minimum a surgical mask—in shared campus environments. These masks are readily available in the entryways of most buildings on campus and are proven to be more effective than cloth masks.

## Ventilation and Cleaning

- CH: Building ventilation is MERV 13; the building is thoroughly cleaned nightly; hand sanitizer and wipes will be available throughout the building.
- EV: Building ventilation is MERV 14 and uses airPHX filters on each floor; the building is thoroughly cleaned nightly; hand sanitizer and wipes are available throughout the building.

## Food and Drink

- Food and drink are discouraged in the classrooms but allowed in common areas. We encourage drink lids.
- Water fountains:
  - o CH: Drinking fountains have been flushed and are fully operational.
  - o EV: Drinking fountains are not yet operational. You should bring your own water if needed.

# REGISTRATION INFORMATION

## Choice and Flexibility

OLLI offers virtual and on campus experiences to meet your needs, study group days and times to meet your schedule, and topic areas to meet your interests. We are proud of the outstanding level of variety you will see in the summer catalog.

Remember, every study group will have a limited number of seats in order to maintain the high quality, peer-led learning model that Northwestern OLLI is known for. As a result, not everyone may get into their first choice. However, members are often pleasantly surprised and pleased by their second, third, or even fourth choice study group which expanded their interests and their friendships. In the spirit of lifelong learning, we encourage members to keep an open mind when registering. There are many outstanding study groups from which to choose!

### STUDY GROUPS:

Due to the negative impacts on engagement, technical complications, and resource constraints, at this time, no single study group will be offered as a hybrid option in which some members of a study group are in-person and some members are virtual. Each study group will be either 100% virtual or 100% in person.

Due to classroom space planning and varied member location, no study group that chooses to be virtual will be able to switch to in-person later in the term. Virtual study groups will remain virtual for the full 4 weeks.

## Membership Purchases and Registration

**Membership Purchases and Registration will continue to be online.** However, if you truly do not have the equipment needed to complete these tasks online, OLLI staff and volunteers are providing limited hours for in-person assistance on a first-come, first-served basis. (If you have been registering online over the last year, these office hours are not appropriate for you, as we expect nearly all members to continue to register and pay for memberships via the online registration system.)

Chicago and Evanston OLLI Offices open for **in-person membership purchase assistance** (only for those without the equipment needed for online membership purchase)

June 9th from 1pm – 4pm

June 13th 9:30am – 12:30pm

Both OLLI offices open for **in-person registration assistance** (only for those without the equipment needed for online registration)

June 16 from 9am – 2pm

## LOGISTICS

### Office Hours:

**Monday—Thursday:** 9 a.m.—4 p.m. (less a flexible hour for lunch)

**Friday:** staff works remotely on Fridays.

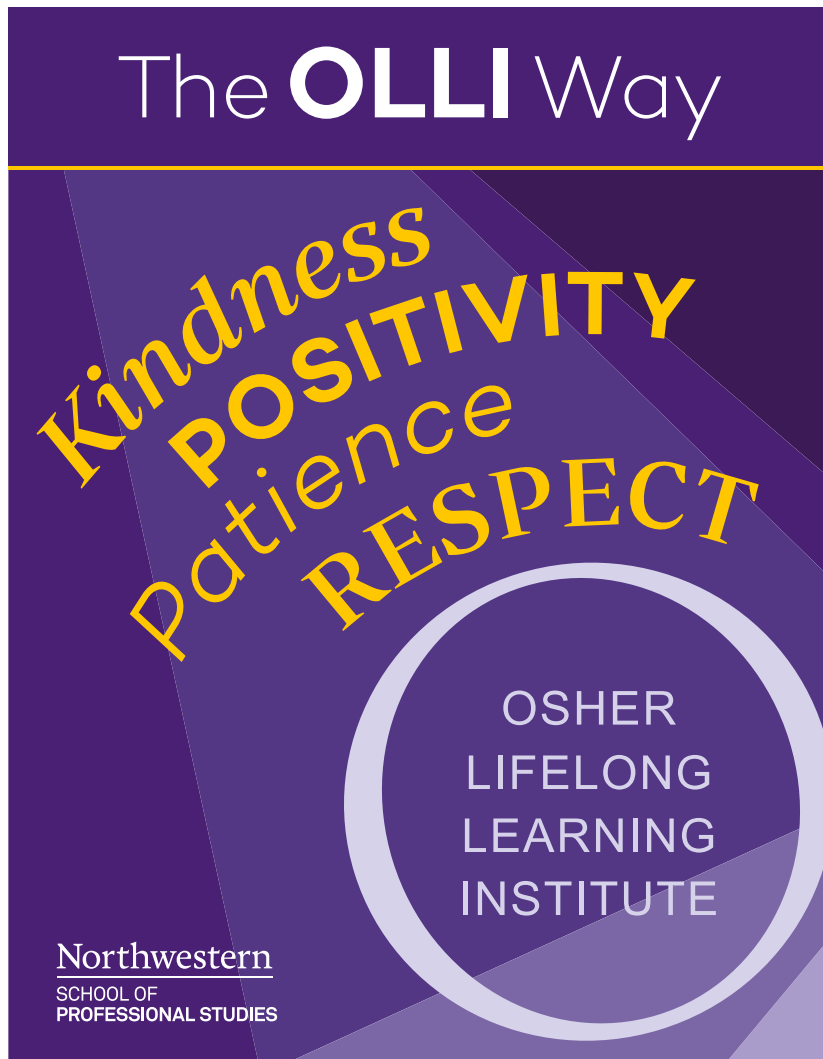
CH: 339 East Chicago Avenue, Room 412, Wieboldt Hall, Chicago, IL 60611

EV: 500 Davis Center, Suite 700, Evanston, IL 60201

Note: OLLI members can arrive up to 45 minutes prior to a study group or event, but your classroom may be occupied until just before your start time. Please be respectful of other groups' time in our limited spaces.

### The OLLI Way

As a lean staff, we do the very best we can to provide an outstanding experience for each and every OLLI member. Our community values kindness, patience, positivity, and respect—something we call The OLLI Way. These values are critical as members, staff, and volunteers interact with one another. They will be especially important as we manage the logistics, fun, and excitement associated with each new OLLI term. Thanks to all of you for embracing the OLLI Way.



## NORTHWESTERN SERVICES AND RESOURCES

**INTERCAMPUS SHUTTLE:** Fully operational and available to OLLI students with a current Wildcard that contains your photo. [Click Here](#) for shuttle information:.

**WILDCARDS:** Wildcards are issued before the fall semester to all OLLI members who purchase a full academic year membership. If you're a current Wildcard holder, your current card will be valid through September, 2022. [Click Here](#) for benefits of the Wildcard.

## RESOURCES

### OLLI Contacts

**EMAIL:** [olli@northwestern.edu](mailto:olli@northwestern.edu)

### OLLI HELP DESK:

<https://spsolli.sps.northwestern.edu/>

---

### Wildcard ID Discounts

[wildcardadv.northwestern.edu](http://wildcardadv.northwestern.edu)

---

### University Police

**EVANSTON:** 847-491-3254

**CHICAGO:** 312-503-8314

**EMERGENCY:** 911

[northwestern.edu/up](http://northwestern.edu/up)

### NU Libraries

Northwestern maintains an extensive library system with combined collections of more than 4.6 million volumes.

OLLI members have access to the NU libraries and databases, however only full-time members with Wildcards have borrowing privileges.

The Main Library building in Evanston is now open. [Click Here](#) for more information.

**PHONE:** 847-491-7658

**EMAIL:** [library@northwestern.edu](mailto:library@northwestern.edu)

**GUIDES:** [libguides.northwestern.edu/OLLI\\_libguide](http://libguides.northwestern.edu/OLLI_libguide)

**LIBRARIAN:** Tracy Coyne

[tracy-coyne@northwestern.edu](mailto:tracy-coyne@northwestern.edu)

**WEBSITE:** [library.northwestern.edu](http://library.northwestern.edu)



Northwestern | SCHOOL OF PROFESSIONAL STUDIES